

LG'S NEW THERMA V IWT AT A GLANCE



SLEEK DESIGN, EASY INSTALLATION, ADVANCED PERFORMANCE

THERMA V R32 IWT, or integrated water tank, is a domestic hot water supply, space heating and cooling solution that conveniently combines an indoor hot water tank with a separate outdoor unit. THERMA V R32 IWT is the perfect space-saving solution for residential applications because hydronic components like the domestic hot water (DHW) and buffer tanks, which are typically installed separately, are fully integrated.

LG THERMA V R32 IWT

All-in-one integration

- Quick & easy installation
- DHW tank & hydronic component integration
- Integrated max. 6kW backup heater
- Integrated expansion tank for heating (12ℓ)

Enhanced installation flexibility

- Light weight & compact indoor unit: only 2 installers required
- Max. 50m refrigerant piping and 3-way piping connection availability
- Integrable buffer tank (40ℓ) & expansion tank for DHW circuit (8ℓ) (optional)

High efficiency

- SCOP up to 4.53 (Average climate/Low temp. application): A+++
- DHW heating efficiency 125% (Profile L): A+



1) Will be acquired

HN0916T NB1

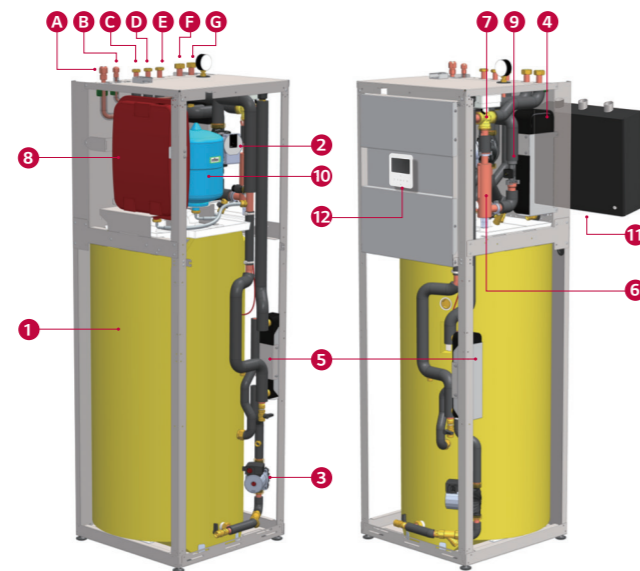


HU051MR U44
HU071MR U44
HU091MR U44



KEY COMPONENTS

- DHW storage tank (200ℓ)
- Main water pump
- Water pump for DHW charging
- Main plate heat exchanger (Ref / Water)
- Plate heat exchanger for DHW (Water / DHW)
- Backup electric heater (Max. 6kW)
- 3-way diverting valve
- Expansion vessel for heating (12ℓ)
- Flow sensor
- Expansion vessel for DHW (8ℓ, Option)
- Buffer tank (40ℓ, Option)
- RS3 Remote controller (Attached on the front panel)
- 5/8" Refrigerant gas pipe
- 3/8" Refrigerant liquid pipe
- G3/4" Domestic hot water outlet
- G3/4" Domestic cold water inlet
- G3/4" DHW Re-circulation
- G1" Heating circuit inlet
- G1" Heating circuit outlet



PRODUCT SPECIFICATION (INDOOR UNIT)

Description				HN0916T NB1
Operation Range (Leaving Water)	Heating	Min.-Max.	°C	15 - 65
	Cooling	Min.-Max.	°C	5 - 27
	Domestic Hot Water	Min.-Max.	°C	15 - 80 ¹⁾
Water Flow Rate	Measuring Range	Min.	ℓ/min	7
		Rated ²⁾ (5 / 7 / 9kW)	ℓ/min	15.8 / 20.1 / 25.9
		Min. - Max.	ℓ/min	5 - 80
Flow Sensor	Heating Circuit		bar	3
Safety Valve	DHW Circuit		bar	10
	Volume		ℓ	12
Piping Connections	Refrigerant Circuit	Gas (Outer Diameter)	mm (inch)	Ø 15.88 (5/8)
		Liquid (Outer Diameter)	mm (inch)	Ø 9.52 (3/8)
	Water Circuit	Inlet	inch	G1" (Ø 22 mm) internal thread
		Outlet	inch	G1" (Ø 22 mm) internal thread
	DHW Tank Water Circuit	Cold Water Inlet	inch	G3/4" (Ø 19.75 mm) internal
		Hot Water Outlet	inch	G3/4" (Ø 19.75 mm) internal
Domestic Hot Water Tank	Re-circulation	inch	G3/4" (Ø 19.75 mm) internal	
	Water Volume	Rated	ℓ	200
Sound Power Level	Internal Thermal Protect Limit		°C	85
			dB(A)	43
Dimensions (W x H x D)	Unit	mm		602 x 1,810 x 680
Weight (Without Water)	Unit	kg		140
Power Supply		V, Ø, Hz		220-240, 1, 50
	Capacity		kW	10 : 2 / 4 30 : 6
Backup Heater		V, Ø, Hz		220-240, 1, 50 / 380-415, 3, 50
	Power Supply			

1) DHW 58-80 Operating is available only when the back up heater is operating.

2) Rated conditions for Low temperature (A7/W35 -> 30)

* Due to our policy of innovation some specifications may be changed without notification.

* Wiring cable size must comply with the applicable local and national codes and "Electric characteristics" chapter should be considered for electrical work and design. Especially the power cable and circuit breaker should be selected in accordance with that.

* LWT : Leaving Water Temperature, OAT : Outdoor Air Temperature

* Sound level values are measured at anechoic chamber. Therefore, these values depend on the ambient conditions and values are normally higher in actual operation.

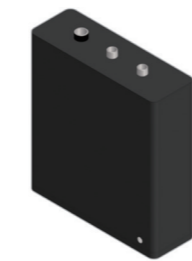
* Performances are accordance with EN14511 and reflect ErP testing conditions. Above gives the declared values at rated conditions acc. ErP regulation.

* This product contains fluorinated greenhouse gases.

ACCESSORY PARTS (OPTIONAL ACCESSORY)

Buffer tank for space heating

As an optional accessory, the installer can install a standard 40ℓ buffer tank for space heating. Fitting seamlessly into the main casing, it can be attached on the backside of the IWT unit.



Buffer tank for space heating				OSHB-40KT.AEU
Water Volume	ℓ			40
Dimensions (W x H x D)	mm			518 x 560 x 175
Weight (w/o water) Product	kg			24

Expansion vessel for DHW

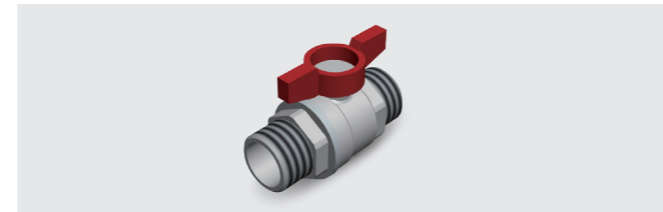
As an optional accessory, the installer can install a standard 8ℓ DHW expansion vessel that conveniently fits inside the indoor unit. It is provided with an accessory kit that includes a flexible connection tube.



Expansion vessel for DHW				OSHE-12KT.AEU
Expansion Volume	ℓ			8
Connection	inch			3/4
Max. Pressure	bar			10
Pre-charge	bar			3
Dimensions (W x H x D)	mm			416 x 238 x 502
Weight (w/o water) Product	kg			2.5

ACCESSORY PARTS (SEPARATELY PROVIDED)

Shut-off valve (1EA)



Shut-off valve with strainer (1EA)



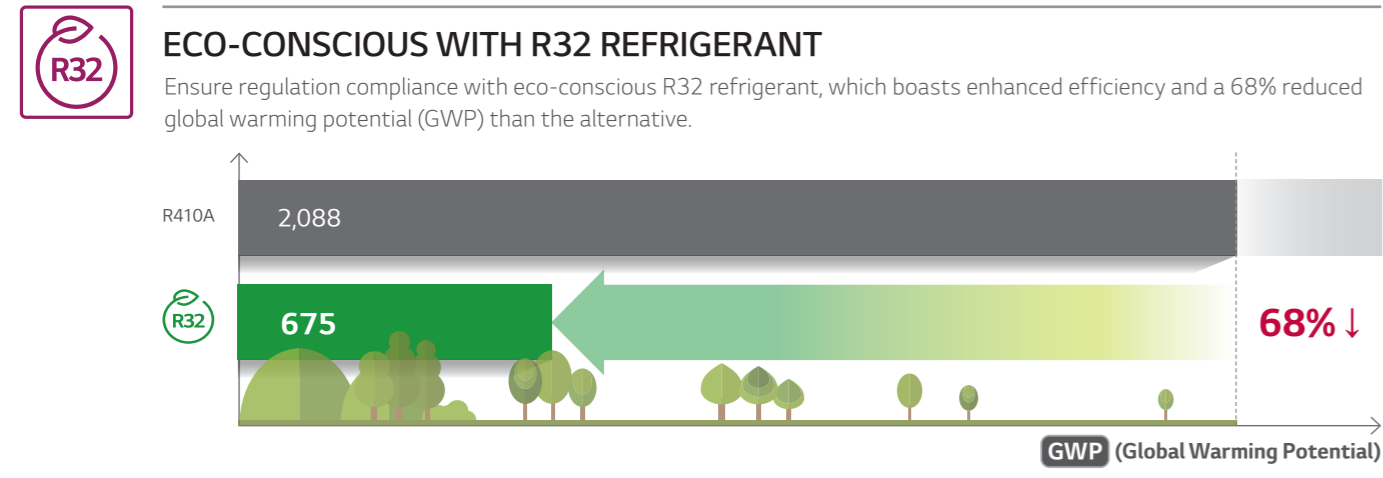
NEW IWT (Integrated Water Tank)



KEY ADVANTAGES

EASY INSTALLATION	EXCELLENT PERFORMANCE & EFFICIENCY	USER CONVENIENCE
<ul style="list-style-type: none"> All in one LG heating configurator* Flexible piping design 	<ul style="list-style-type: none"> R1 compressor R32 refrigerant Flash gas injection Wide operation range Black Fin heat exchanger Smart grid (Energy state) 	<ul style="list-style-type: none"> Harmonious exterior Intuitive interface LG ThinQ Mixing circuit Various control options Flow sensor 3rd party boiler Energy monitoring Seasonal auto mode Low noise mode

* will be supported within this year



R1 Compressor™ LG'S REVOLUTIONARY TECHNOLOGY

R1 Compressor™ technology offers advanced efficiency, reliability and operational range due in part to the enhanced tilting motion of the scroll.

- Extended operation range (Max. 135Hz)**
- Centrifugal oil return & Oil separating guide for oil discharge reduction**
- Shaft-through structure & Support both ends of shaft**
 - Solid compressor operation assuring higher durability
- Bottom compression & Simple structure**
 - Lower noise & vibration
 - Less weight
 - Superior reliability

LG ThinQ SEAMLESS CONNECTIVITY

LG ThinQ allows users to monitor and control compatible LG products remotely, so they can set the temperature and regulate the use of their THERMA V R32 IWT anytime, anywhere. ThinQ technology also works with voice activation with Google Home.

Mandatory accessory:
 PWFMD200 (LG Wi-Fi Modem)
 PWYREW000 (10m extension connect cable in between THERMA V indoor and LG Wi-Fi Modem) could be required depends on installation condition.

* Search "LG ThinQ" on Google market or App store, then download the app.
 * Google home voice is supported in United Kingdom, France, Germany, Spain, Italy, Austria, Ireland, Portugal.

SOPHISTICATED DESIGN

The THERMA V R32 IWT indoor unit can be installed in multiple indoor spaces, to include the utility or laundry room, garage or kitchen due to its sleek design.

INTUITIVE CONTROL

THERMA V is equipped with a new remote controller which supports various functions.

- Premium Design**
 - New modern design 4.3 inch color LCD display
 - Capacitive touch button (Especially On/Off button turn on LED)
- User Friendly Interface**
 - Information displayed with simple graphic, icon & text
 - Easy-to-use navigation
- Convenient Functions**
 - Optimize schedule setting logic
 - Set the period, date, On/Off time, operation mode, target temp easy installation setting

PRODUCT SPECIFICATION (OUTDOOR UNIT)

Description		OAT	LWT	Indoor Unit		HN0916T NB1		
				Outdoor Unit	HU051MR U44	HU071MR U44	HU091MR U44	
Nominal Capacity	Heating	7 °C	35 °C	kW	5.50	7.00	9.00	
	Cooling	7 °C	55 °C	kW	5.00	5.25	5.50	
Nominal Power Input	Heating	35 °C	18 °C	kW	5.50	7.00	9.00	
	Cooling	7 °C	35 °C	kW	1.22	1.56	2.05	
COP	Heating	7 °C	55 °C	kW	1.92	2.02	2.12	
	Cooling	35 °C	18 °C	kW	1.20	1.59	2.20	
EER	Heating	7 °C	35 °C	W/W	4.50	4.50	4.40	
	Cooling	7 °C	55 °C	W/W	2.60	2.60	2.60	
Operation Range (Outdoor Temperature)	Heating	Min. - Max.	°C DB		-25 - 35			
	Cooling	Min. - Max.	°C DB		5 - 48			
Refrigerant	Type				R32			
	GWP (Global Warming Potential)				675			
	Factory Charge			g	1,500			
	Chargeless Pipe Length			m	10			
	Additional Charging Volume			g/m	30			
Compressor	Type				Hermetic Sealed Scroll			
	Outer Diameter	Liquid	mm (inch)		Ø 9.52 (3/8)			
Refrigerant Piping Connection	Length	Gas	mm (inch)		Ø 15.88 (5/8)			
		Standard	m		5			
	Level Difference (ODU - IDU)	Max.	m		50			
		Max.	m		30			
Dimensions	Unit	W x H x D	mm	950 x 834 x 330				
Weight	Unit		kg	60				
	Sound Power Level	Heating	Rated	dB(A)	60.0	61.0	61.0	
Sound Pressure Level (at 1m)	Heating	Rated	dB(A)	52.0	53.0	53.0		
	Voltage, Phase, Frequency		V, Ø, Hz		220-240, 1, 50			
Power Supply	Maximum Running Current		A	14.2	15.7	23.0		
	Recommended Circuit Breaker		A	16.0	20.0	25.0		
	Power Supply Cable (Included Earth, H07RN-F)		mm ² x cores	4.0 x 3				

* Due to our policy of innovation some specifications may be changed without notification.
 ** Wiring cable size must comply with the applicable local and national codes and "Electric characteristics" chapter should be considered for electrical work and design.
 * Performance are accordance with EN14511 and reflect ERP testing conditions. Above gives the declared values at rated conditions acc. ERP regulation.
 * This product contains fluorinated greenhouse gases.
 * Sound level values are measured at anechoic chamber. Therefore, these values depend on the ambient conditions and values are normally higher in actual operation.
 * LWT: Leaving Water Temperature, OAT: Outdoor Air Temperature.

SEASONAL ENERGY EFFICIENCY

Description		Indoor Unit	HN0916T NB1			
			Outdoor Unit	HU051MR U44	HU071MR U44	HU091MR U44
Space Heating (According to EN14825)	Average Climate Water Outlet 35°C	SCOP	-	4.53	4.48	4.46
		Rated Heat Output (Prated)	kW	6.00	6.00	6.00
		Seasonal Space Heating Efficiency (ηs)	%	178	176	175
		Seasonal Space Heating Eff. Class (A+++ to D Scale)		A+++	A+++	A+++
		Annual Energy Consumption	kWh	2,554	2,769	2,918
	Average Climate Water Outlet 55°C	SCOP	-	3.01	3.00	3.03
		Rated Heat Output (Prated)	kW	6.00	6.00	6.00
		Seasonal Space Heating Efficiency (ηs)	%	117	117	118
		Seasonal Space Heating Eff. Class (A+++ to D Scale)		A+	A+	A+
		Annual Energy Consumption	kWh	3,775	3,823	3,814
Domestic Hot Water Efficiency (According to EN 16147)	Declared Load Profile		L	L	L	
	Water Heating Efficiency (ηwh)	%	125	125	125	
	Water Heating Eff. Class (A+++ to G Scale)		A+	A+	A+	

1) Will be acquired

LG Life's Good

www.lg.com http://partner.lge.com
 Copyright © 2020 LG Electronics. All rights reserved.